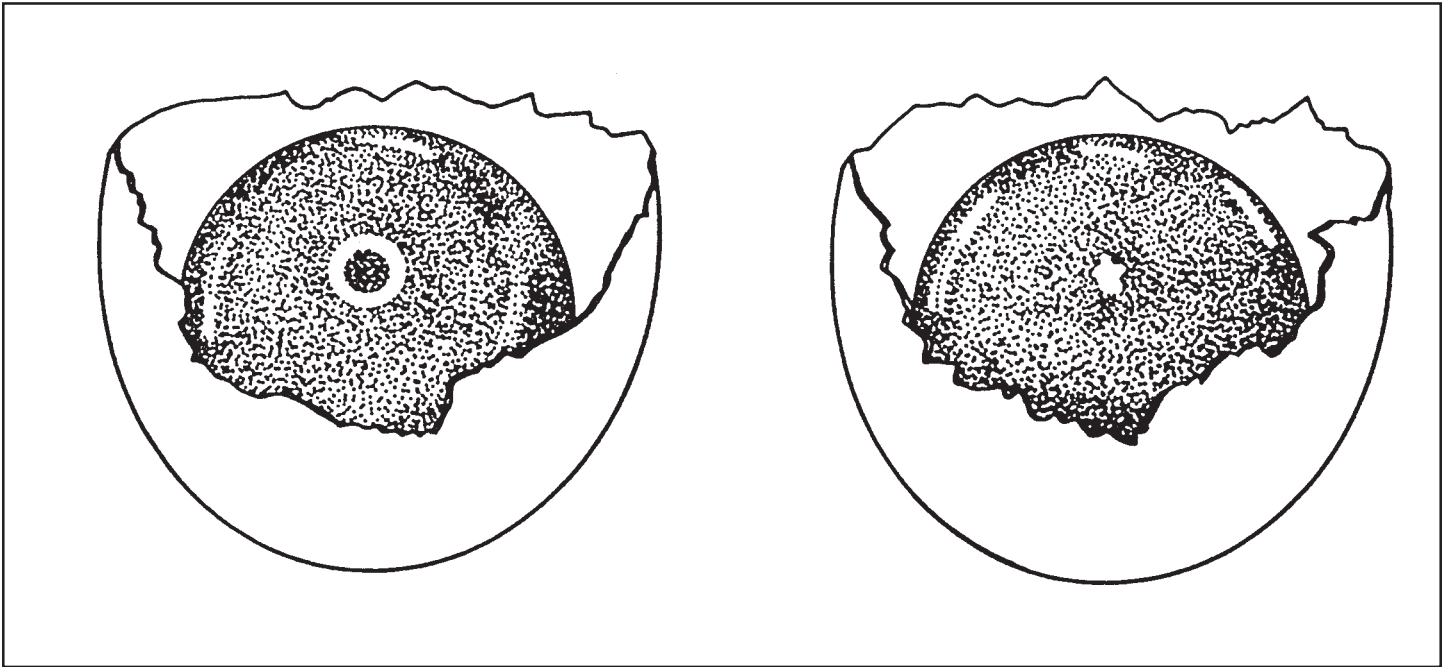


Which Egg Is Fertile?

When fertile eggs are incubated by either a hen or in an incubator, they grow.
What is needed to make an egg fertile?

Look at the picture below and mark the fertile egg.



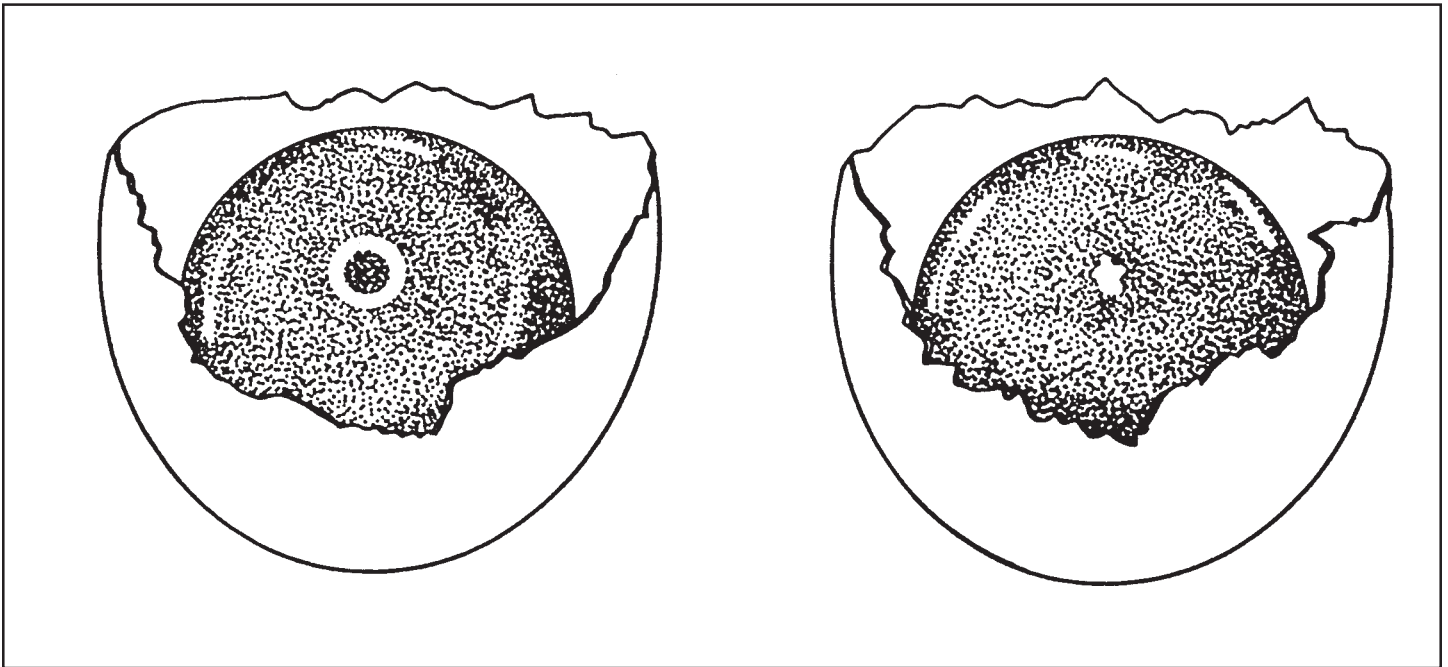
How do you know that the egg you have marked is fertile? Explain.

KEY

Which Egg Is Fertile?

When fertile eggs are incubated by either a hen or in an incubator, they grow.
What is needed to make an egg fertile?

Look at the picture below and mark the fertile egg.



How do you know that the egg you have marked is fertile? Explain.

The egg on the left. The germinal disc is larger in the fertile egg as compared to the infertile egg. Cell division has occurred in the fertile egg. The fertile egg has an enlarged circle or donut. Ther germinal disc is small in the infertile egg.